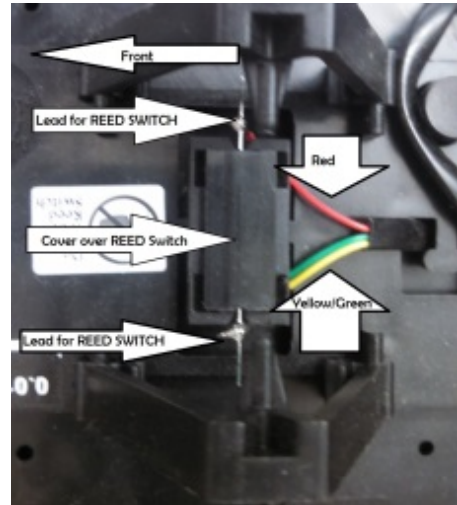
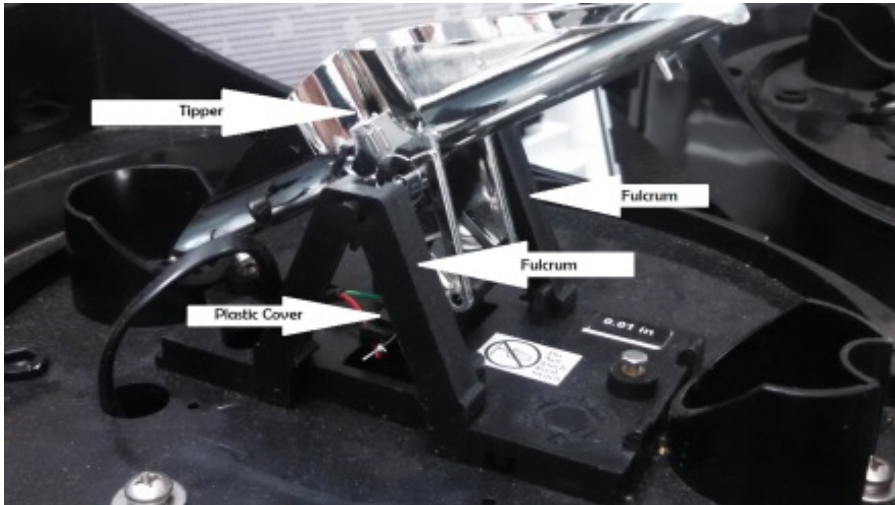


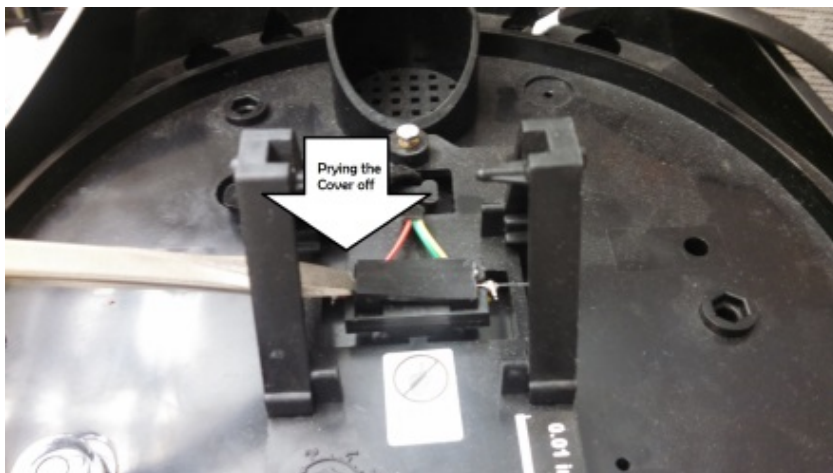
Instructions for Replacing the Rain Reed Switch

Remove the rain cone by twisting and lifting it out of the way.



Remove the tipping bucket assembly by spreading the fulcrum that holds the tipping bucket assembly.

The fulcrum is the two A structures. Apply slight outward pressure between the two A sections and the tipping bucket will dislodge. It doesn't take much pressure. The tipping bucket and the shaft that holds the tipping bucket between the two A sections will come out.



Remove the plastic cover over the reed switch. This is the plastic part at the base and between the two A frames. A small screwdriver is a good tool for this.

Unsolder the wires connected to the reed switch. Please note which wires are soldered to each end (Red wire on Right, green / yellow on left, with the mounting bracket away from you).

Remove the old reed switch and replace with the new reed switch.

Solder the wires to the new reed switch. Solder to the end of the leads and make sure the leads don't get too hot.

Replace the plastic cover.

Insure the shaft is in the tipping bucket then connect the tipping bucket between the two A frames.

The reed switch is a fragile component. Handle with care, do not cut or bend the leads. Solder towards the end of the leads

